

Kajaria PLY & LAMINATES

Prime Liner

Elevate the glam with

HANDPICKED HUES 2024-25



Kajaria PLY & LAMINATES

CORPORATE OFFICE

Kajaria Plywood Pvt. Ltd.

J1/B1 (Extn.), Mohan Co - op Industrial Estate (Opp. Badarpur Thermal Power Station),
Mathura Road, New Delhi - 110 044

Phone: +91-11-2694 6409 | Email: info@kajariaply.com | www.kajariaply.com

“

Introducing Prime Liner - our innovative liner laminate collection, designed with a focus on constant innovation and customer satisfaction. With unique features and designs inspired by global trends, Prime Liner elevates your products while meeting your design needs. Available in Woodgrain, Fabric, and Solid categories, it adds elegance and protection to wardrobes, cabinets, furniture, and more.

”

KLL 69201 Ivory Weaves



KLL 69202 Grey Weaves



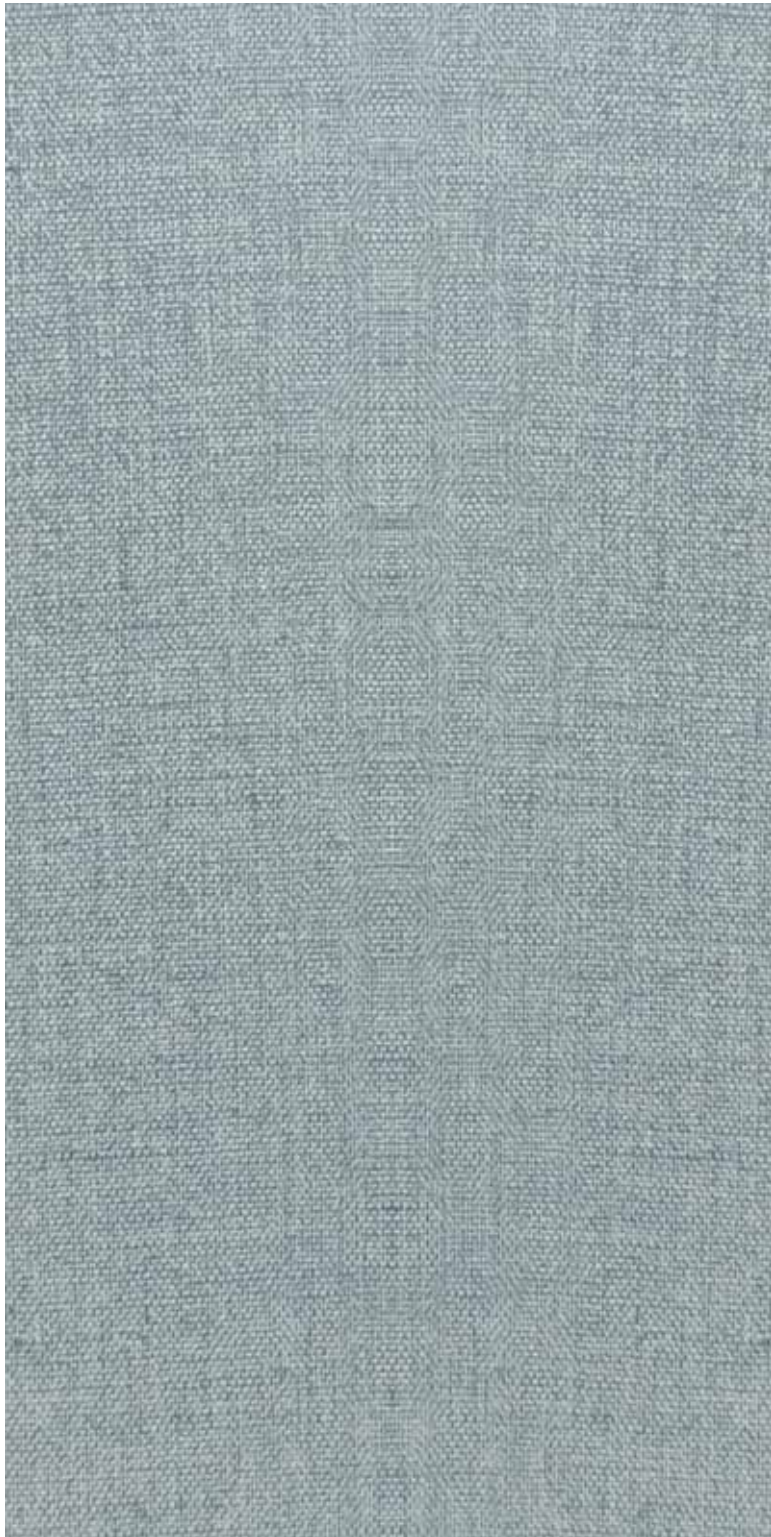
05

KLL 69203 Dark Khadi



06

KLL 69204 Grey Jute



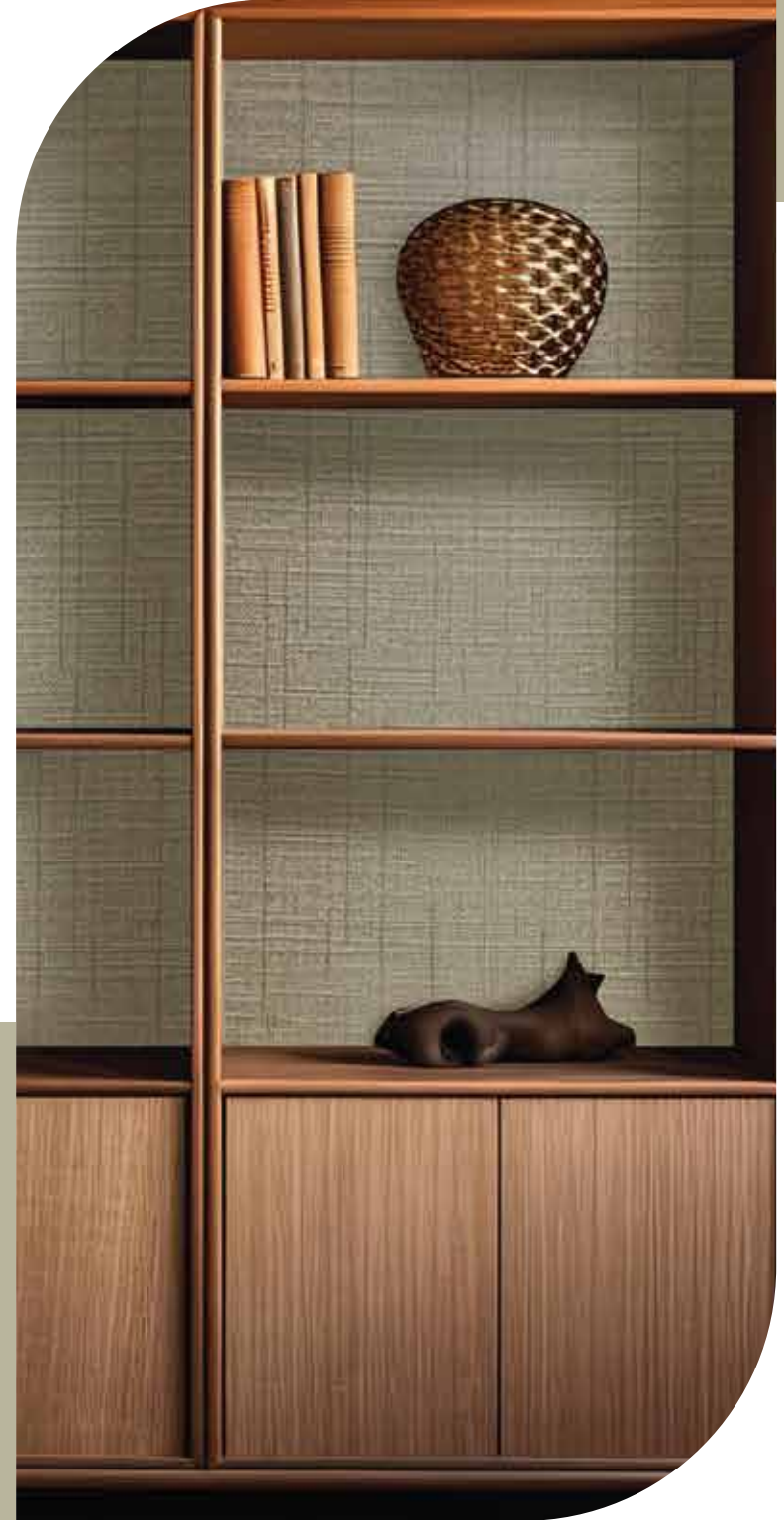
KLL 69205 Dark Linen



KLL 69206 Cream Linen

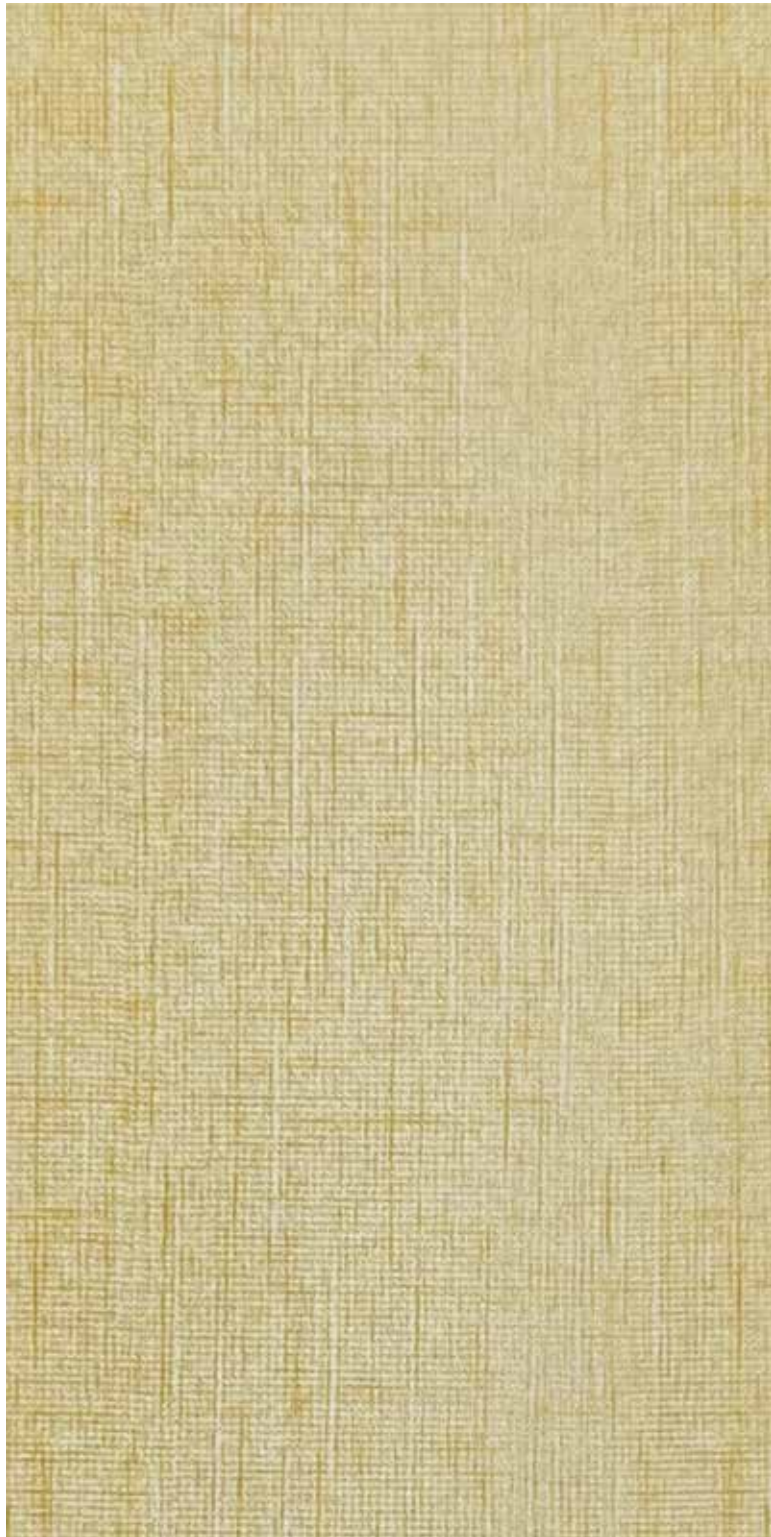


09



10

KLL 69207 Cross Ivory Fabric



KLL 69208 Grey Linen



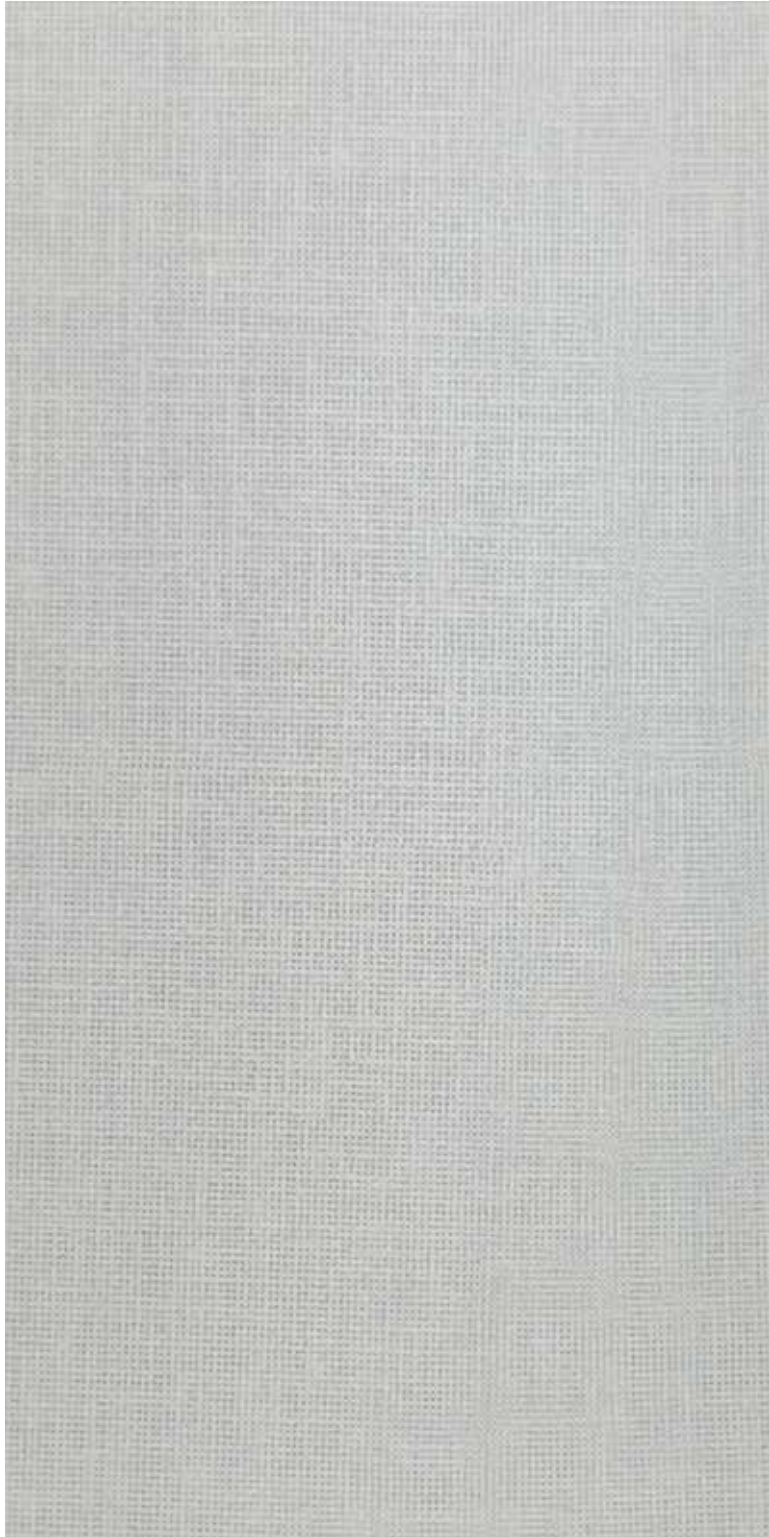
KLL 69209 Khadi Fabric



KLL 69210 Dark Grey Fabric



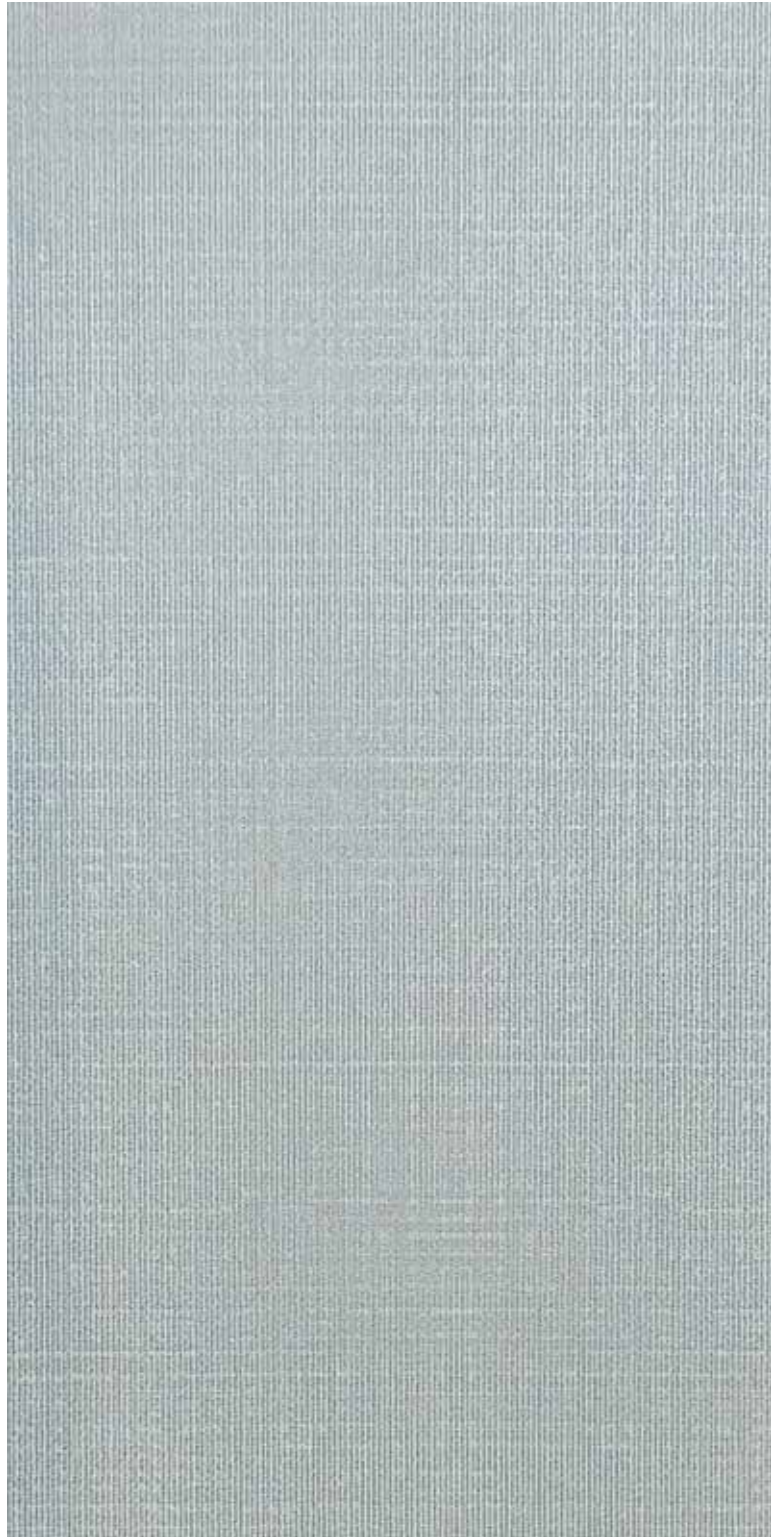
KLL 69211 Sirena Light



KLL 69212 Dark Jute



KLL 69213 Light Grey Linen

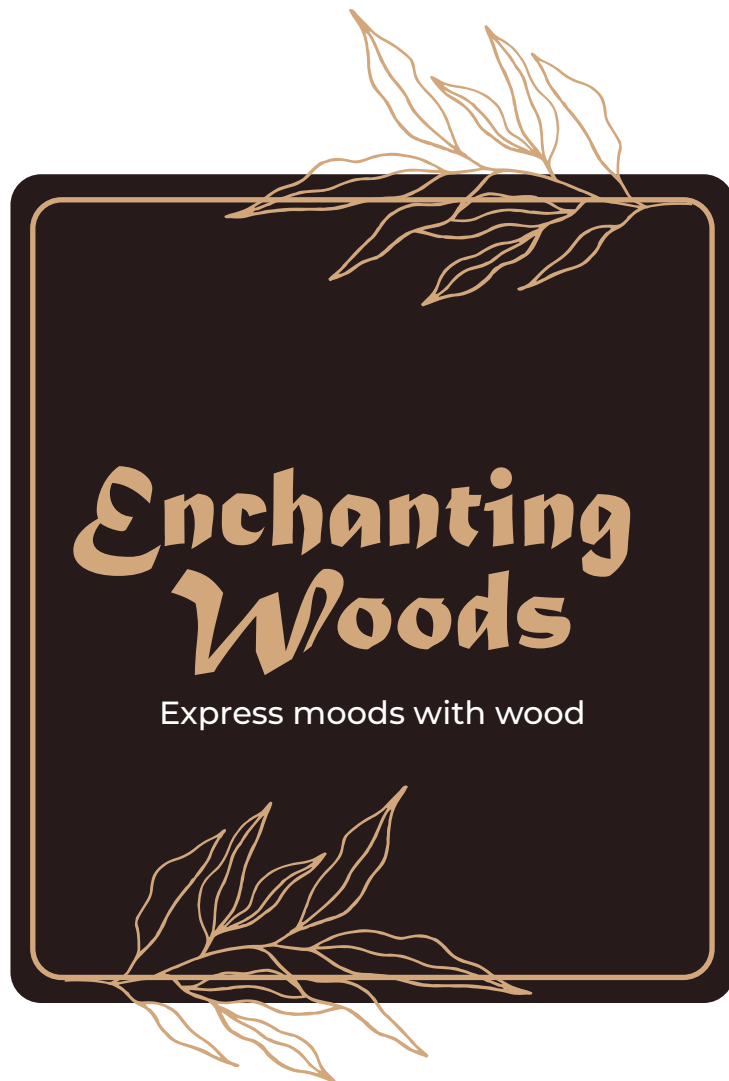


17



18

KLL 69301 Sapeli



KLL 69302 Beech



KLL 69303 Silky Chroma



KLL 69304 Antique Walnut

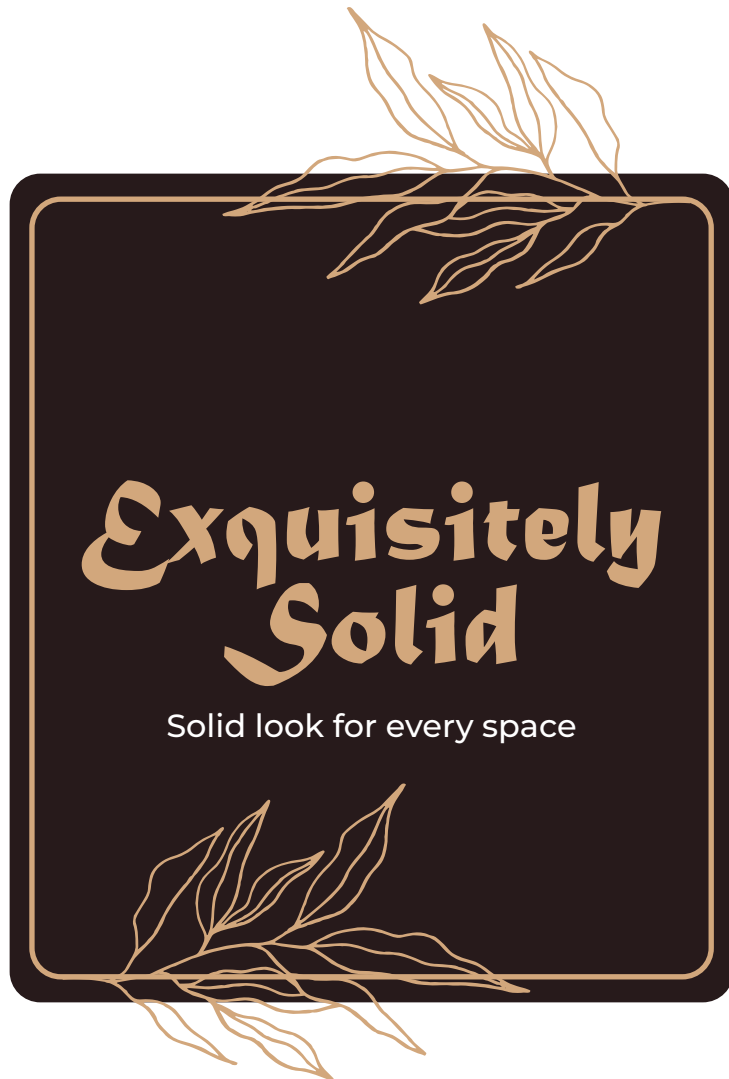


KLL 69305 Super Wood

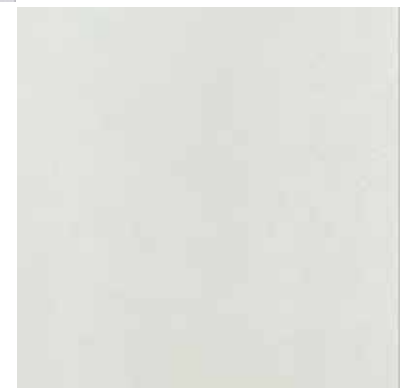


KLL 69306 Golden Cedar





KLL 69101 White



KLL 69102 Off White

KLL 69103 Light Grey



KLL 69105 Black



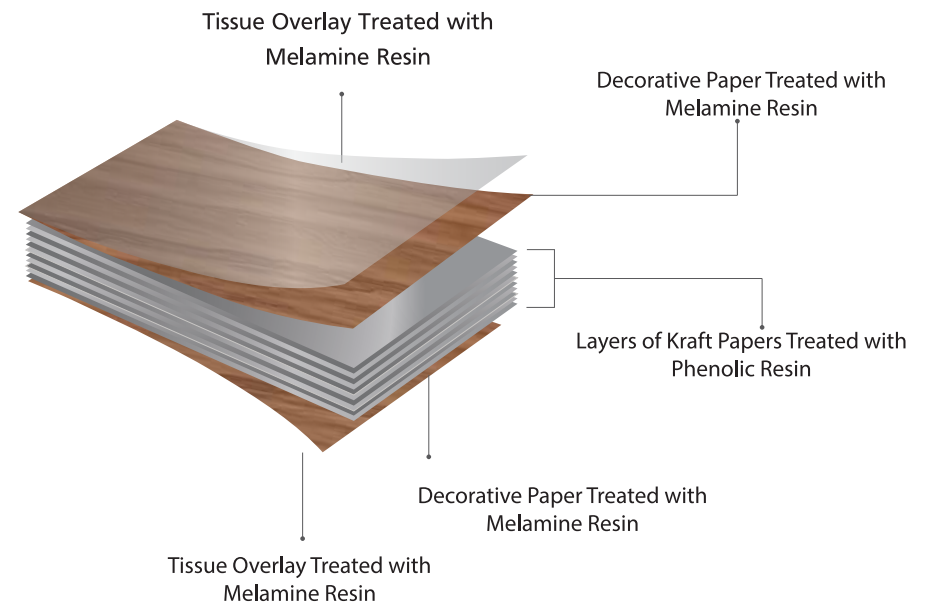
KLL 69104 Dark Grey



Technical Specifications PRIME LINER

S.NO.	PERFORMANCE CHARACTERISTICS	REQUIREMENT AS PER IS 2046: 1995	PRIME LINER COMPLIANCE
	Type and Thickness	VLS, Thickness 0.70 mm	0.70 Nominal
01	Dimensional Properties		
	Length	(2440 mm) +10, -Nil	Conforms
	Width	(1220 mm) +10, -Nil	Conforms
	Thickness	0.70 ± 0.10 mm	0.65 to 0.72
	Squareness	1.5 mm/ M, max	Conforms
	Straightness of edges	1.5 mm/ M, max	
	Broken corner	One broken corner or two broken corners of <15 mm are allowed	
02	Flatness	120 mm/M, max	Conforms
03	Resistance to surface wear, Revolutions (IP+FP)/2	50 (Min)	Conforms
04	Resistance to immersion in boiling water		
	a) Mass increase, % b) Thickness increase, % c) Appearance	12.0 (Max) 14.0 (Max) Not worse than Grade 3	Conforms Conforms Conforms
05	Dimensional stability at deviated temperature		
	Longitudinal Transverse	0.7% (Max) 1.15 % (Max)	Conforms Conforms
06	Resistance to impact by small diameter ball, Load	15N (Min)	Conforms
07	Resistance to colour change in Xenon Arc Light	not worse than Grade 6	Conforms
08	Resistance to cracking	Not worse than Grade 4	Conforms
09	Resistance to scratching	1.5 N (Min)	Conforms
10	Resistance to staining	Not worse than Grade 5	Conforms
11	Resistance to steam	Not worse than Grade 3	Conforms

Product Construction


 MOISTURE
RESISTANT

 IMPACT
RESISTANT

 BORER/
TERMITE
RESISTANT


LOW VOC